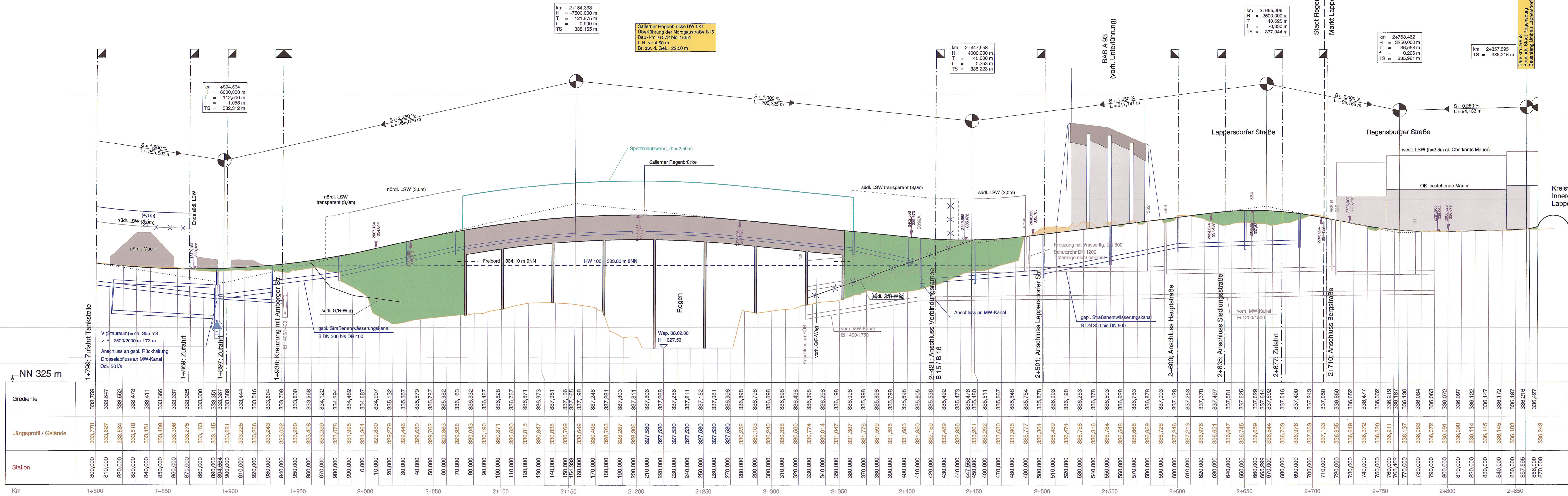


# Nordgaustraße - Höhenplan 2



Km	Station	Gradierte	Längsprofil / Gelände
1+800	800,000	333,759	333,770
1+810	810,000	333,647	333,627
1+820	820,000	333,552	333,552
1+830	830,000	333,473	333,473
1+840	840,000	333,411	333,411
1+850	850,000	333,366	333,366
1+860	860,000	333,337	333,337
1+870	870,000	333,325	333,325
1+880	880,000	333,330	333,330
1+890	890,000	333,351	333,351
1+900	900,000	333,387	333,387
1+910	910,000	333,421	333,421
1+920	920,000	333,444	333,444
1+930	930,000	333,464	333,464
1+940	940,000	333,480	333,480
1+950	950,000	333,490	333,490
1+960	960,000	333,496	333,496
1+970	970,000	333,499	333,499
1+980	980,000	333,500	333,500
1+990	990,000	333,500	333,500
2+000	1000,000	333,500	333,500
2+010	1010,000	333,500	333,500
2+020	1020,000	333,500	333,500
2+030	1030,000	333,500	333,500
2+040	1040,000	333,500	333,500
2+050	1050,000	333,500	333,500
2+060	1060,000	333,500	333,500
2+070	1070,000	333,500	333,500
2+080	1080,000	333,500	333,500
2+090	1090,000	333,500	333,500
2+100	1100,000	333,500	333,500
2+110	1110,000	333,500	333,500
2+120	1120,000	333,500	333,500
2+130	1130,000	333,500	333,500
2+140	1140,000	333,500	333,500
2+150	1150,000	333,500	333,500
2+160	1160,000	333,500	333,500
2+170	1170,000	333,500	333,500
2+180	1180,000	333,500	333,500
2+190	1190,000	333,500	333,500
2+200	1200,000	333,500	333,500
2+210	1210,000	333,500	333,500
2+220	1220,000	333,500	333,500
2+230	1230,000	333,500	333,500
2+240	1240,000	333,500	333,500
2+250	1250,000	333,500	333,500
2+260	1260,000	333,500	333,500
2+270	1270,000	333,500	333,500
2+280	1280,000	333,500	333,500
2+290	1290,000	333,500	333,500
2+300	1300,000	333,500	333,500
2+310	1310,000	333,500	333,500
2+320	1320,000	333,500	333,500
2+330	1330,000	333,500	333,500
2+340	1340,000	333,500	333,500
2+350	1350,000	333,500	333,500
2+360	1360,000	333,500	333,500
2+370	1370,000	333,500	333,500
2+380	1380,000	333,500	333,500
2+390	1390,000	333,500	333,500
2+400	1400,000	333,500	333,500
2+410	1410,000	333,500	333,500
2+420	1420,000	333,500	333,500
2+430	1430,000	333,500	333,500
2+440	1440,000	333,500	333,500
2+450	1450,000	333,500	333,500
2+460	1460,000	333,500	333,500
2+470	1470,000	333,500	333,500
2+480	1480,000	333,500	333,500
2+490	1490,000	333,500	333,500
2+500	1500,000	333,500	333,500
2+510	1510,000	333,500	333,500
2+520	1520,000	333,500	333,500
2+530	1530,000	333,500	333,500
2+540	1540,000	333,500	333,500
2+550	1550,000	333,500	333,500
2+560	1560,000	333,500	333,500
2+570	1570,000	333,500	333,500
2+580	1580,000	333,500	333,500
2+590	1590,000	333,500	333,500
2+600	1600,000	333,500	333,500
2+610	1610,000	333,500	333,500
2+620	1620,000	333,500	333,500
2+630	1630,000	333,500	333,500
2+640	1640,000	333,500	333,500
2+650	1650,000	333,500	333,500
2+660	1660,000	333,500	333,500
2+670	1670,000	333,500	333,500
2+680	1680,000	333,500	333,500
2+690	1690,000	333,500	333,500
2+700	1700,000	333,500	333,500
2+710	1710,000	333,500	333,500
2+720	1720,000	333,500	333,500
2+730	1730,000	333,500	333,500
2+740	1740,000	333,500	333,500
2+750	1750,000	333,500	333,500
2+760	1760,000	333,500	333,500
2+770	1770,000	333,500	333,500
2+780	1780,000	333,500	333,500
2+790	1790,000	333,500	333,500
2+800	1800,000	333,500	333,500
2+810	1810,000	333,500	333,500
2+820	1820,000	333,500	333,500
2+830	1830,000	333,500	333,500
2+840	1840,000	333,500	333,500
2+850	1850,000	333,500	333,500
2+860	1860,000	333,500	333,500
2+870	1870,000	333,500	333,500
2+880	1880,000	333,500	333,500
2+890	1890,000	333,500	333,500
2+900	1900,000	333,500	333,500

Stadt Regensburg  
 Tiefbauamt  
 Planfeststellung  
 öffentlich ausgelegt  
 vom: 03. März 2014  
 bis: 17. März 2014

Festgestellt nach § 17 FStrG  
 gemäß Beschluss vom 31.01.2014  
 31/32.2.4364.2.B16 - 11  
 Regensburg, den 31.01.2014  
 Regierung der Oberpfalz

\* mit Änderungen aufgrund des Ergebnisses  
 der Erörterungsverhandlung

Nr.	Änderungen	Datum	Name
2	Wegfall südlicher Geh- und Radweg	13.01.2014	Moser
1	Erhöhung südliche Lärmschutzwand auf 4,10m	13.10.2014	Moser
Nr.	Änderungen	Datum	Name

Anlage Nr. 8  
 Plan Nr. 2

STADT REGENSBURG  
 TIEFBAU - STRASSEN U. BRÜCKENPLANUNG

PLANFESTSTELLUNG

Ausbau der Nordgaustraße  
 mit Neubau Salzener Regenbrücke

Höhenplan Teil 2  
 Bau-Km 2+000 bis 2+860

Maßstab 1:1000

STADT REGENSBURG, Tiefbauamt

15.10.2008  
 Datum

15.10.2008  
 Datum